

3D Body Scanner

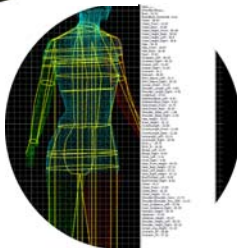
For Apparel, Health/Fitness/Medical,
Entertainment/Gaming, and Virtual Worlds

NX16

No larger than a retail changing room.

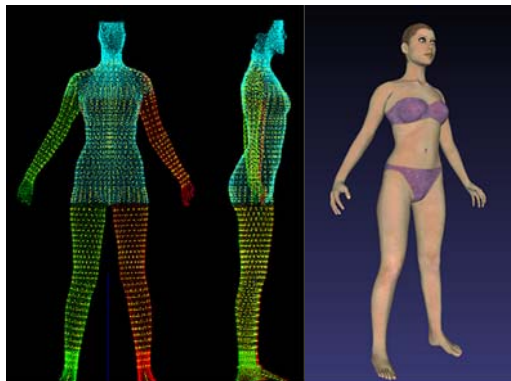


- Extremely small footprint - fits anywhere
- Data acquisition in seconds
- Hundreds of automatic measurements
- Automatic Avatar generation
- Safe white-light technology
- Private, self-scanning mode



[TC]²'s 3D body scanning technology scans the whole body in seconds and rapidly produces a true-to-scale 3D body model. Scanning offers greater accuracy than manual measurements. Measurement definitions and printouts can be easily customized.

3D scanning technology uses include:



- health/medical and fitness management
- body shape analysis
- sizing surveys
- 3D product development for apparel and equipment
- made-to-measure clothing
- high quality Avatar generation
- fully automatic
- consumer friendly, accentuating safety and privacy

Specifications

Dimensions: 4'x5'
Area: 20 sq. ft.
Power: 15 amp (one outlet)
Technology: White-light, non-moving scan heads
Operation System: Windows XP, Vista

Operational Parameters

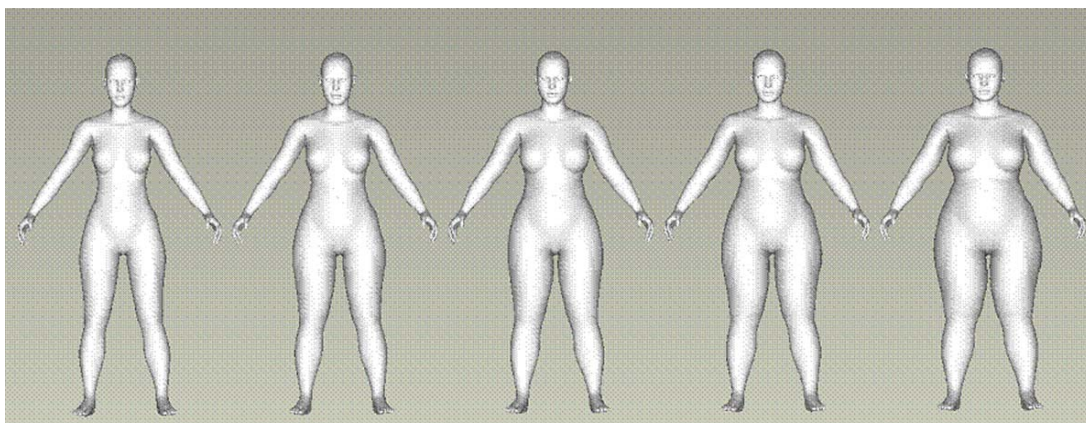
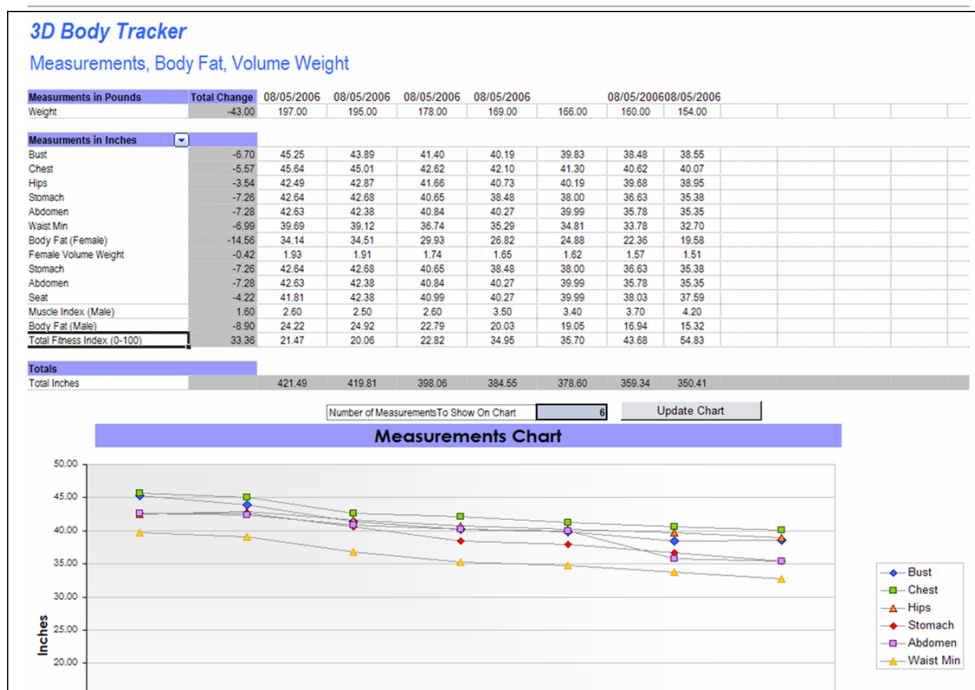
Point Accuracy: <1 mm
Circumferential accuracy: <3 mm
Data point grid density: 2x2 <mm
Scan duration: 8 seconds
Data density: 600,000 - 1 million points
Scan volume: 2 m h x 1.2 m w x 0.6 m d

Call for Quote

5651 Dillard Drive - Cary, NC 27518 USA
Phone: 919.380.2156 Fax: 919.380.2181 Email: dbruner@tc2.com
www.tc2.com

NX₁₆

Applications include the capability to track body changes during weight and exercise programs, and even "predict" your expected result after weight loss.



Predicted Weight Loss Visualization